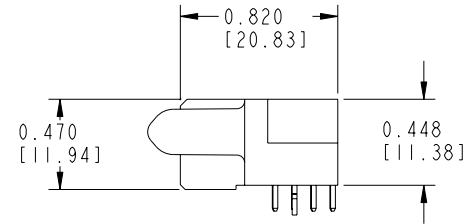
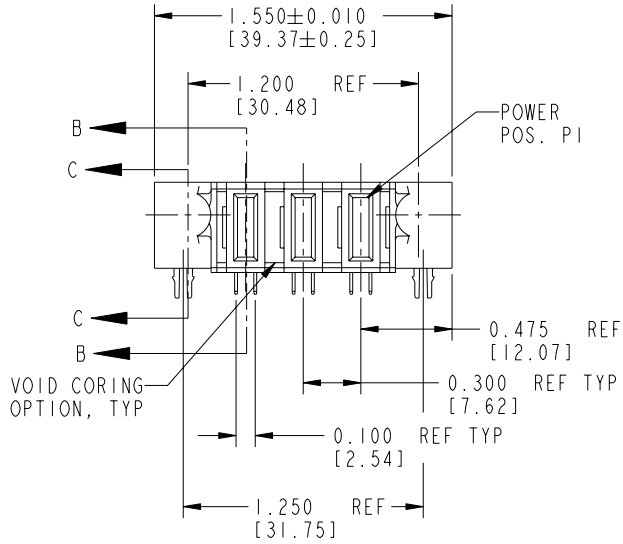


Tous droits strictement réservés. Reproduction ou communication a des tiers interdite sous quelque forme que ce soit sans autorisation écrite du propriétaire. Propriété de c FCI. Droits de reproduction FCI.

**FCI**

All rights strictly reserved. Reproduction or issue to third parties in any form whatever is not permitted without written authority from the proprietor. Property of FCI. Copyright FCI.

PRODUCT No.	ROWS	POWER				
		E2	P3	P2	P1	E1
51820-001 NOTE: ②	D C B A		PC	PA	PC	



CODE	DIM "M"	CONTACT TYPE
	±0.010 [0.25]	
PA	0.042 [1.07]	POWER
PC	0.092 [2.34]	POWER
HA	N/A [N/A]	HOLD-DOWN

mat'l code		NOTE 1		tolerances unless otherwise specified		CUSTOMER		<b>FCI</b> www.fciconnect.com	
ltr	ecn no.	dr	date	linear	.XX±.01/0.X±0.3	COPY		title	3ACP RIGHT ANGLE SOLDER RECEPTACLE
A	V12104	JWS	7/23/01		.XXX±.005/0.XX±0.13	projection			
B	V21515	TAB	10/08/02	angles	.XXX±.0020/0.XXX±0.051	scale		product family	PwrBlade
C	DG05-0260	SJ	08/01/05		0°±2°	1:1			
sheet index		revision sheet	C	C	dr	J. SHAFFER	7/23/01	size	dwg no
1		2	1	2	engr	J. ALLISON	7/23/01	A	51820-001
					chr	J. ALLISON	7/23/01	sheet	
					appd	J. ALLISON	7/23/01	1 of 3	
								cage code	
								22526	

Pro/E

3

cage code 22526

4

**PDM: Rev:C**

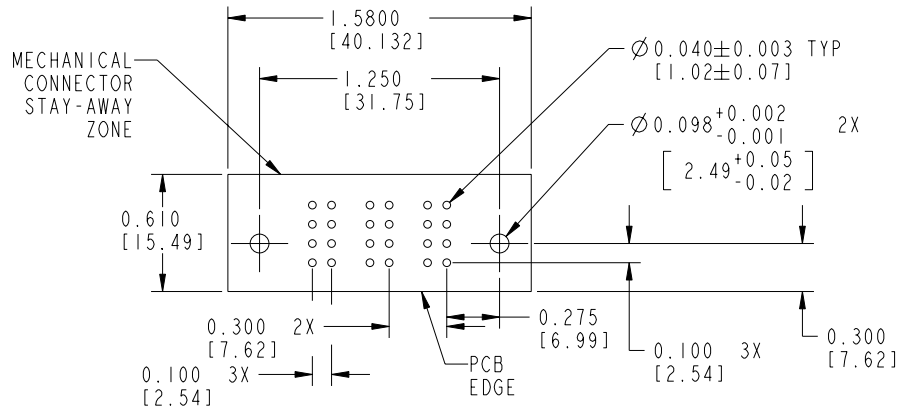
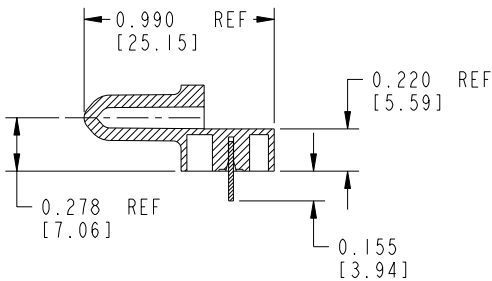
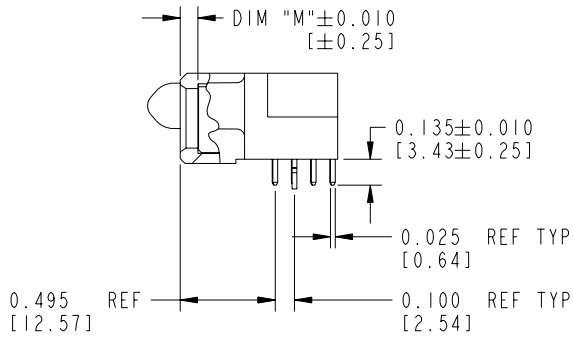
STATUS: **Released**

Printed: Aug 14, 2007

Tous droits strictement reserves. Reproduction ou communication a des tiers interdite sous quelque forme que ce soit sans autorisation écrite du propriétaire. Propriete de c FCI. Droits de reproduction FCI.

All rights strictly reserved. Reproduction or issue to third parties in any form whatever is not permitted without written authority from the proprietor. Property of FCI. Copyright FCI.

PRODUCT NUMBER  
51820-001--  
NOTE: ②



RECOMMENDED PCB LAYOUT

mat'l code		NOTE 1		tolerances unless otherwise specified		CUSTOMER		 www.fciconnect.com	
ltr	ecn no.	dr	date	linear	.XX ± .01 / 0.X ± 0.3	COPY			
B				projection	.XXX ± .005 / 0.XX ± 0.13			3ACP	
				angles	.XXX ± .0020 / 0.XX ± 0.051			RIGHT ANGLE SOLDER RECEPTACLE	
		dr	J. SHAFFER	7/23/01	INCH/MM		product family	PwrBlade	code
		enr	J. ALLISON	7/23/01	scale		size	dwg no	213
		chr	J. ALLISON	7/23/01	1:1		A	51820-001	sheet
		appd	J. ALLISON	7/23/01					2
sheet index	revision sheet								

Pro/E

cage code 22526

PDM: Rev:C

STATUS: Released

Printed: Aug 14, 2007

Tous droits strictement reserves. Reproduction ou communication a des tiers interdite sous quelque forme que ce soit sans autorisation écrite du propriétaire. Propriete de c FCI. Droits de reproduction FCI.

**A**  
**FCI**

All rights strictly reserved. Reproduction or issue to third parties in any form whatever is not permitted without written authority from the proprietor. Property of FCI. Copyright FCI.

A

B

PRODUCT NUMBER  
51820-001--  
NOTE: ②

CONNECTOR NOTES:

1. FOR ADDITIONAL INFORMATION, REFER TO DRAWING NUMBER 51820.

2. PLATING:

51820-001 Singal Pin:30u"/0.76um Au OVER 50u"/1.27um Ni ON THE CONTACT AREA,  
AND 100u"/2.54um SnPb PLATING OVER 50u"/1.27um Ni ON THE TERMINATION SECTION.  
Power Pin:30u"/0.76um Au OVER 50u"/1.27um Ni ON THE CONTACT AREA,  
AND 100u"/2.54um SnPb PLATING OVER 50u"/1.27um Ni ON THE TERMINATION SECTION.

51820-001LF Singal Pin:30u"/0.76um Au OVER 50u"/1.27um Ni ON THE CONTACT AREA,  
AND 78u"/2.00um Sn PLATING OVER 50u"/1.27um Ni ON THE TERMINATION SECTION.  
Power Pin:30u"/0.76um Au OVER 50u"/1.27um Ni ON THE CONTACT AREA,  
AND 78u"/2.00um Sn PLATING OVER 50u"/1.27um Ni ON THE TERMINATION SECTION.

PART NUMBER 51820-001LF MEETS EUROPEAN UNION DIRECTIVE AND OTHER COUNTRY REGULATIONS AS DESCRIBED IN GS-22-008.

THE HOUSING WILL WITHSTAND EXPOSURE TO 260° PEAK TEMPERATURE FOR 10 SECONDS IN A WAVE SOLDER APPLICATION WITH A CIRCUIT BOARD.

PCB NOTES:

3. ALL DIMENSIONS ARE BASIC UNLESS OTHERWISE SPECIFIED.
4. ALL THROUGH HOLES ARE LOCATED WITH A TRUE POSITION OF 0.004 [0.10]
5. ALL HOLE DIAMETERS ARE FINISHED HOLE SIZE.
6. Ø\*\*\* THROUGH HOLES ARE UNPLATED.
7. Ø0.0453±0.0010 [1.151±0.025] DRILLED HOLES PLATED WITH 0.0003 [0.008] MIN SnPb OVER 0.001 [0.03] TO 0.003 [0.08] Cu PLATING TO ACHIEVE A Ø\*\*\* HOLE.

A

B

**CONFIDENTIAL**

mat'l code		SEE NOTE		tolerances unless otherwise specified		CUSTOMER		<b>A</b> <b>FCI</b> www.fciconnect.com	
ltr	ecn no.	dr	date	linear	.XX±.01/0.X±0.3	projection	COPY	title	3ACP
B					.XXX±.005/0.XX±0.13			RIGHT ANGLE SOLDER RECEPTACLE	
				angles	.XXX±.0020/0.XXX±0.051		INCH/MM	product family	PwrBlade
				dr	0°±2°	scale	1:1	code	213
				enr	J. SHAFFER 7/23/01			size	dwg no
				chr	J. ALLISON 7/23/01			A	51820-001
				appd	J. ALLISON 7/23/01			sheet	3
sheet index	revision sheet								

1 | 2

Pro/E

3 |

cage code 22526

4